

Quick Network Setup Guide

Follow the instructions for Setting Up the Printer in the "Quick Setup Guide" first.

- If you are going to connect the printer to a network, we recommend you contact your system administrator prior to installation.
- If you are an Administrator: Configure your printer referring to the following instructions.
- If you are installing the driver on your PC refer to the reverse side of this sheet once the administrator has configured the printer.

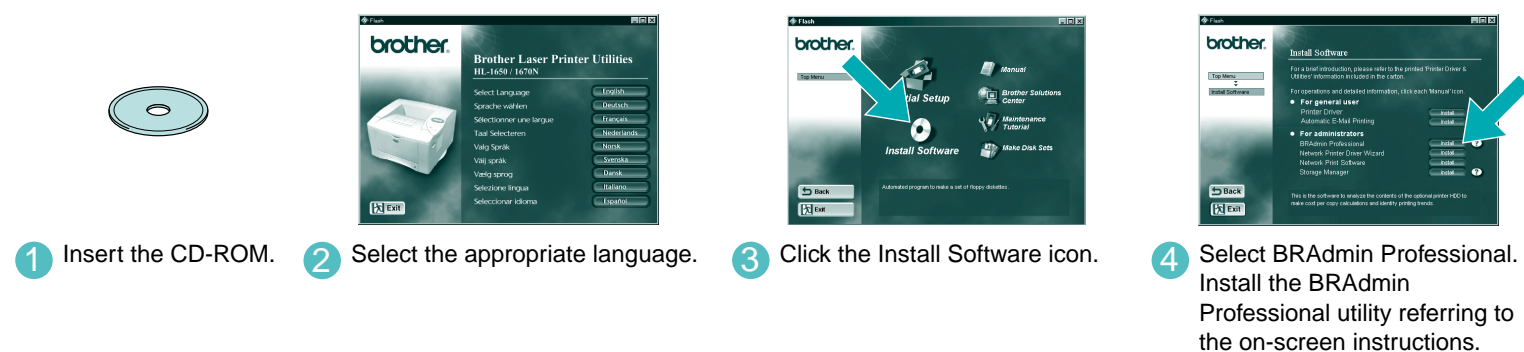
Some illustration and screens are based on the HL-1600 series.

LJ5631001 Printed in Japan

For the Administrator (For Windows® users only)

Install the BRAdmin Professional Configuration utility

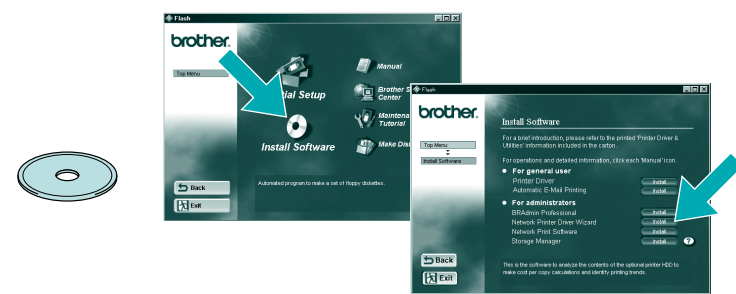
The BRAdmin Professional software provides sophisticated network and printer management capabilities for Brother. By identifying potential problems before they arise, and by addressing important IT requirements such as streamlined printer configuration, mass configuration and enterprise-wide upgrades, the BRAdmin Professional software plays an important role in Printer network management.



Network Printer Driver Wizard: Useful Utility for Peer-to-Peer users

Use the Brother Network Printer Driver Wizard software to automate the installation of Brother networked printers in a TCP/IP environment. The Wizard can create an Executable file that can be sent to other network users, when run, the Executable file installs the appropriate printer driver and network printing software directly on the remote PC.

To access the Network Printer Driver Wizard, insert the CD-ROM supplied with the printer, click the Install Software icon and select the Network Printer Driver Wizard.

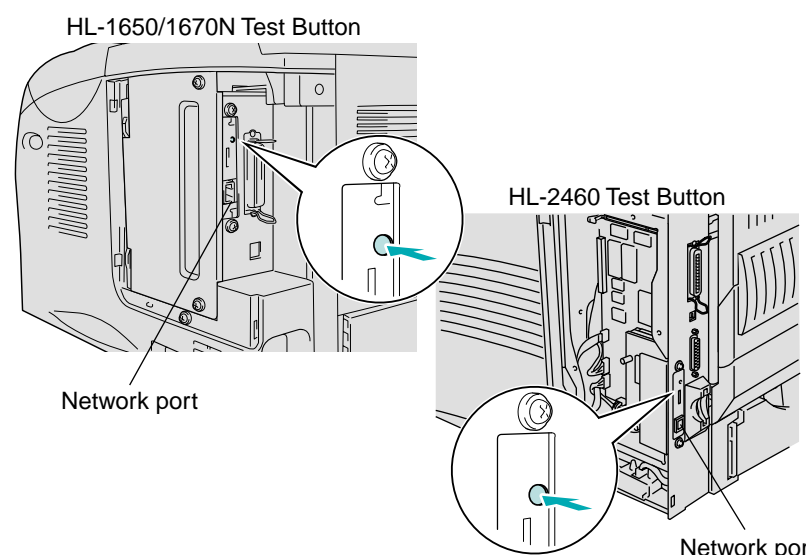


Print Configuration page

Press the Network Test Button for less than 5 seconds to print a configuration page.

Factory default setting

If you wish to reset the print server back to its default factory settings (resetting all information such as the password and IP address information) hold down the Network Test Button for more than 5 seconds.

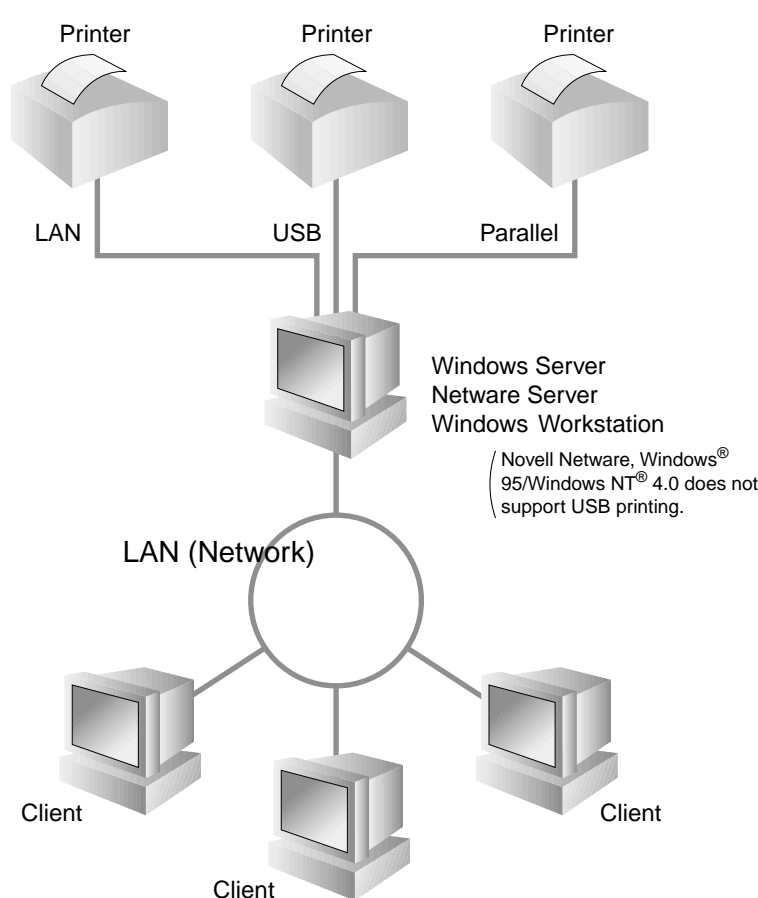


©2000 Brother Industries, Ltd. ©1998-2000 TROY XCD Inc. ©1983-2000 PACIFIC SOFTWARES INC. ALL RIGHTS RESERVED ©Copyright 2000 by Brother Industries, Ltd. Originally Based on: It's - ITRON Implementation by Sakamura Lab (Phase3 Release1.3.2) ©Copyright 1989-2000 by Sakamura Lab, the University of Tokyo, JAPAN Windows® and Windows NT® are registered trademarks of Microsoft Corporation in the U.S. and other countries. HP/HP/UX, JetDirect and JetAdmin are trademarks of Hewlett-Packard Company. UNIX is a trademark of UNIX Systems Laboratories. PostScript is trademark of Adobe Systems Incorporated. Netware is a trademark of Novell, Inc. Apple Macintosh, iMac, LaserWriter, and AppleTalk are trademarks of Apple Computer, Inc. BRAdmin Professional are trademark of Brother Industries, Ltd. All other brand and product names mentioned in this Quick Network Setup Guide and user's guide are registered trademarks or trademarks of respective companies.

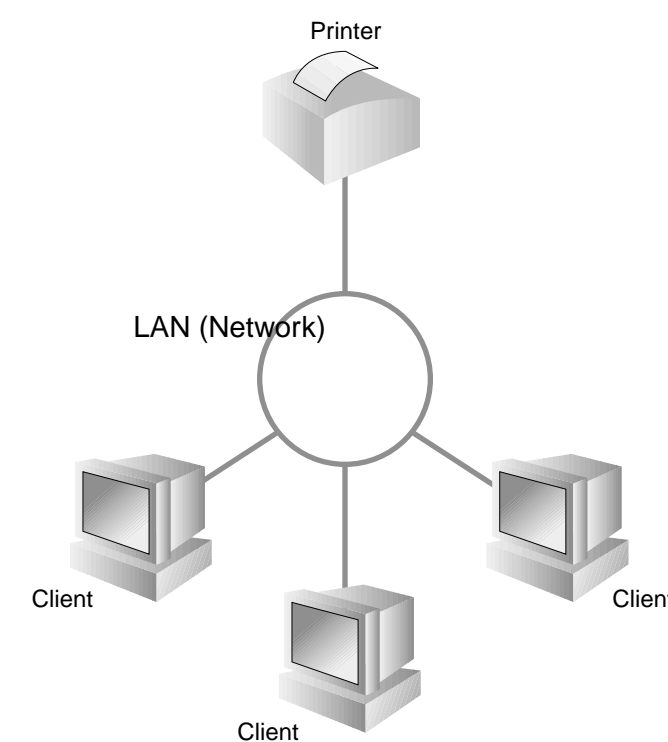
Type of Network Printer

An example of a **Shared printer***1, printing through a queue, or sharename.

*1 A shared printer can be seen in the Network Neighborhood.



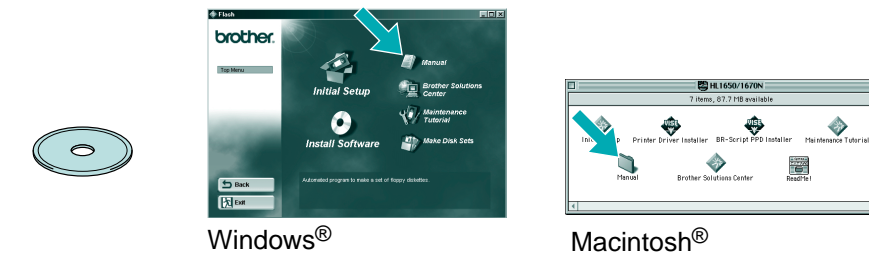
An example of a printer in a **Peer-to-Peer** network.



Network Guide Chapter Map

To configure the print server refer to the Network Guide

To access the Network Guide, insert the CD-ROM supplied with the printer, click the Manual icon and select the Network Guide.



Windows® 95/98/Me	Peer-to-Peer	TCP/IP	Chapter 3	Peer-to-Peer Printing
		NetBIOS	Chapter 4	NetBIOS Peer-to-Peer Printing
Windows NT®	Brother Internet Print	TCP/IP	Chapter 5	How to Configure Internet Printing
	Netware	IPX/SPX	Chapter 6	Novell Network Printing
Windows® 2000	Peer-to-Peer	TCP/IP	Chapter 2	TCP/IP Printing
		NetBIOS	Chapter 4	NetBIOS Peer-to-Peer Printing
		DLC/LLC	Chapter 8	DLC Printing
	Brother Internet Print (NT® 4.0 only)	TCP/IP	Chapter 5	How to Configure Internet Printing
UNIX/Linux	Netware	IPX/SPX	Chapter 6	Novell Network Printing
	Peer-to-Peer	TCP/IP	Chapter 2	TCP/IP Printing
		NetBIOS	Chapter 4	NetBIOS Peer-to-Peer Printing
Macintosh®	DLC/LLC	Chapter 8	DLC Printing	
	AppleTalk	Chapter 7	Macintosh Printing	
OS2 Warp Server	Brother Internet Print	TCP/IP	Chapter 5	How to Configure Internet Printing
	Netware	IPX/SPX	Chapter 6	Novell Network Printing
LAN Server	Peer-to-Peer	TCP/IP	Chapter 2	TCP/IP Printing
		NetBIOS	Chapter 4	NetBIOS Peer-to-Peer Printing
DEC (Non UNIX)	IPP (Internet Printing Protocol)	TCP/IP	Chapter 2	TCP/IP Printing
	Netware	IPX/SPX	Chapter 6	Novell Network Printing
Banyan VINES	AppleTalk	Chapter 7	Macintosh Printing	
	TCP/IP	Chapter 7	Macintosh Printing	
Web Browser Management Function	OS2 Warp Server	TCP/IP	Chapter 2	TCP/IP Printing
	LAN Server	NetBIOS	Chapter 4	NetBIOS Peer-to-Peer Printing
BRAdmin Professional	DEC (Non UNIX)	DEC_LAT	Chapter 9	LAT Network Configuration
	Banyan VINES	VINES	Chapter 10	Banyan VINES Network Configuration
BRAdmin Professional	Web Browser Management Function	TCP/IP	Chapter 11	Web Based Management
		TCP/IP	Chapter 12	BRAdmin Configuration
		IPX/SPX	Chapter 12	BRAdmin Configuration

Installing the Driver for Network users

Before you continue, please ensure that the administrator has configured the network printer settings correctly.

Step 1 to 4

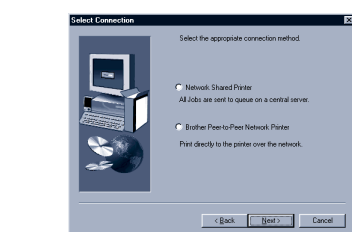
Follow the instructions in the **Quick Setup Guide** first.

For Windows® users only

Step 5 Connect the Printer to Your Network & Install the Driver

- 1 Click the "Connect the interface cable and install the printer driver / utilities".
- 2 Select the Network cable.
- 3 Turn the printer power switch off.

- 4 Connect the cable to your printer, and then connect it to a free port on your hub.
- 5 Turn the printer power switch on.
- 6 Click the Next button.



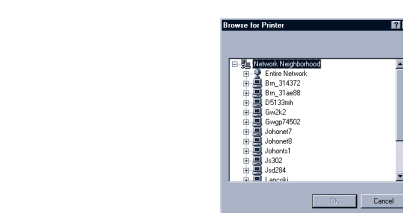
Select the Network connection style and go to Step 6.

You can refer to the figure "Type of Network Printer" on the reverse side of this sheet.

- 7 Select the "Network shared printer" or the "Brother peer-to-peer network printer", and then click the Next button.

For Network shared printer users

Step 6 Select the appropriate printer Queue or 'Sharename'



- 1 Select your printer's queue, and then click the OK button.



- 2 Once the appropriate queue is specified, the printer driver will be installed.

The setup is now complete.

For Brother Peer-to-Peer network printer users (LPR- Recommended Peer to Peer printing Method)

Step 6 Configuring the LPR port

For Windows® 95/98/Me users only

- 1 Select "LPR (Recommended)", and then click the Next button.
- 2 Enter a unique your port name (ex. BLP1), and then click the OK button.

- 3 Specify the printer's IP Address (or click the Browse button to see a list of printers), and click the OK button.
- 4 Click the Finish button and restart your PC. **After your PC has restarted, setup is complete.**

For Windows NT® 4.0/ Windows® 2000 users only

- 1 Select "LPR (Recommended)", and then click the Next button.
- 2 Click the Next button.

Note: If this screen appears, insert the Windows NT® 4.0 CD-ROM into your CD-ROM drive.

- 3 Enter the printer's IP Address and the port name BINARY_P1, then click the Next button.
- 4 Click the Finish button and restart your PC. **After your PC has restarted, setup is complete.**

For Brother Peer-to-Peer network printer users (NetBIOS)

Step 6 Configuring the NetBIOS port

- 1 Select NetBIOS, and click the Next button.
- 2 Enter a unique your port name (ex. BNT1), and then click the OK button.

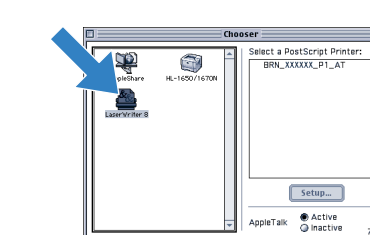
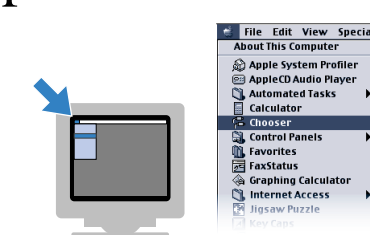
- 3 Enter the path name (or click the Browse... button to see a list of printer's), and then click the OK button.
- 4 Click the Finish button and restart your PC. **After your PC has restarted, setup is complete.**

For Macintosh® users only

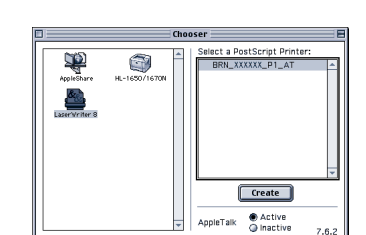
Step 5 Connect the Printer to your Macintosh® & Install the BR-Script PPD file

*2 If the Apple® LaserWriter8 Driver is not already installed on your system, you can download it from <http://www.apple.com>.

- 1 Double click the BR-Script PPD Installer icon and then follow the instructions on the screen.
- 2 Turn the printer power switch off.
- 3 Connect the cable to your printer, and then connect it to a free port on your hub.
- 4 Turn the printer power switch on.



Note: In the Chooser you will see the name BRN_XXXXXX_P1_AT, where "XXXXXX" is the last six digits of the Ethernet address. See Chapter 7 of the Network User's Guide for more information.



- 7 Click on the appropriate print server, and close the Chooser. **The setup is now complete.**