

US English

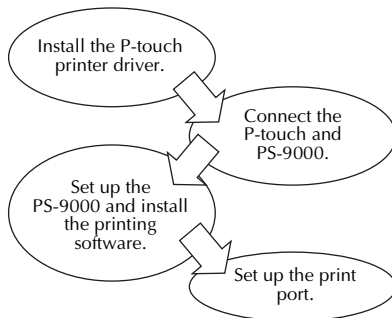
Setting Up P-touch Print Server PS-9000

1 Introduction

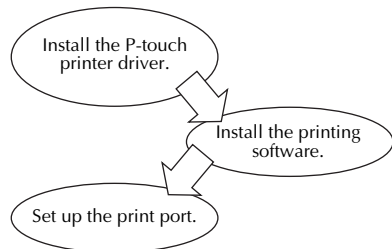
- This Setup Guide describes the procedure for setting up PS-9000. For details on the setup procedure, refer to the manual provided on the enclosed CD-ROM. (In order to view the manual, Adobe® Acrobat® Reader® or Adobe® Reader® is required.)
- The procedure for creating a P-touch network port (Brother PS-9000 Port) is described in this Setup Guide.

2 Procedure for setting up PS-9000

For the initial installation (for the administrator computer)



For setup onto the second or more computer (for client computers)

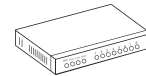


3 Checking the package contents and preparing equipment

- Check that the following accessories are included.
 - ① PS-9000 unit
 - ② AC adapter and AC cable
 - ③ CD-ROM (containing the manual and tools for setting up this unit)
 - ④ Setup Guide (this manual)
 * For details on the QL-1050N accessories, refer to the QL-1050N Quick Start Guide.

- Prepare the following.

- ① USB cable
* Connects this unit to the P-touch
- ② Network cable
* Connects this unit to the network
- ③ Ethernet HUB
* Required for a network environment



4 Installing the P-touch printer driver

QL-500/QL-550/QL-650TD
QL-1050/QL-1050N
PT-9500PC
PT-9200DX

From the dialog box that appears when the CD-ROM included with PS-9000 (this unit) is inserted into the drive, click [P-touch Driver], and then install the network driver for your P-touch.

Note

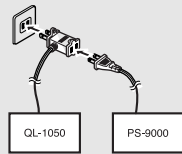
- Install the printer driver according to the instructions that appear on the screen.

5 Connecting PS-9000

- 1 Use the network cable to connect PS-9000 to the Ethernet hub.
- 2 Connect the AC adapter to PS-9000, and then plug the power cable of the P-touch and PS-9000 into the electrical outlet.
- 3 Use the USB cable to connect PS-9000 to the P-touch. (PS-9000: Type A connector; P-touch: Type B connector)

Caution

- The QL-1050N power cord is two separate cords. After connecting to the PS-9000 and the QL-1050N, plug the power cord into the socket.

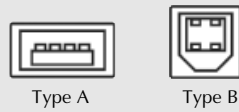


- The shape of the power cord depends on your model.
- Don't connect the power cord to other machines than the specified.

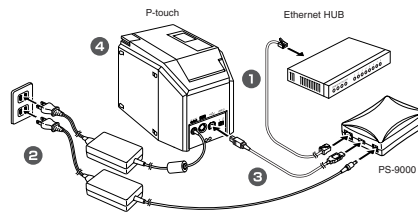
Note

- The USB cable has two different types of connectors. Be sure to insert the correct type of connector into the correct port.

USB Cable Connectors



- 4 Turn on the P-touch.

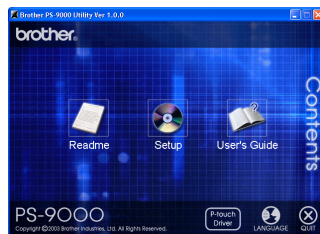


Note

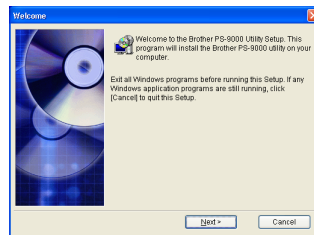
- The shape of the power cord depends on your model.

6 Setting up PS-9000 and installing the printing software

- 1 After the CD-ROM is inserted into the CD-ROM drive of the computer, the main menu dialog box automatically appears.
 - If the main menu dialog box does not appear, open My Computer, select the CD-ROM drive, and then run "autorun.exe".



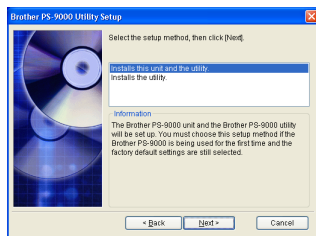
- 2 In the main menu dialog box, click [Setup]. The welcome message shown below appears. Click [Next].



3 Read the Software License Agreement, and then click [Yes] if you agree.

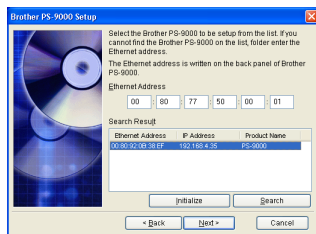


4 Select "Installs this unit and the utility.", and then click [Next].



- When setting up the second or more computer (client computers), select "Installs the utility.", click [Next], and then continue with step 8.

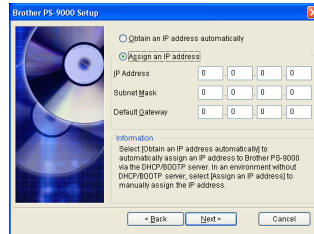
5 Select PS-9000, which is to be set up, and then click [Next].



- If the product is not displayed in the list, click [Search].

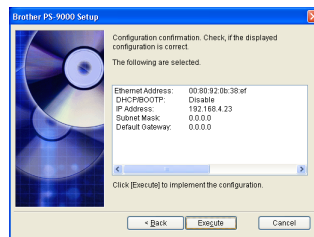
6 Specify the IP address.

- If "Assign an IP address" is selected (recommended)
→ In the following dialog box that appears, type in the IP address, subnet mask and default gateway. Consult your network administrator for the appropriate settings.

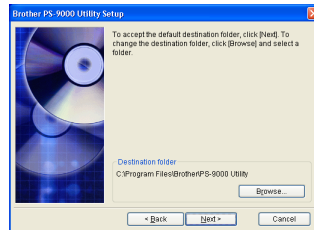


- If "Obtain an IP address automatically" is selected
→ In an environment with a DHCP/BOOTP server, the IP address of PS-9000 is automatically assigned.

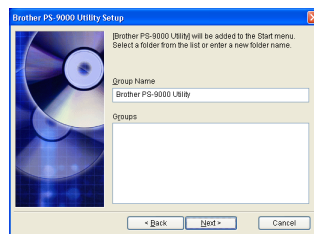
7 The selected configuration is displayed for you to check it. If the configuration is correct, click [Execute] to apply it.



8 Click [Next].

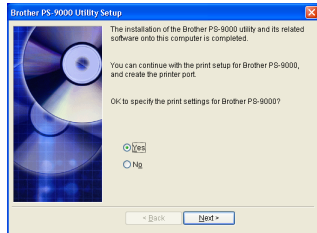


9 Specify the group name that will appear in the Start menu, and then click [Next].



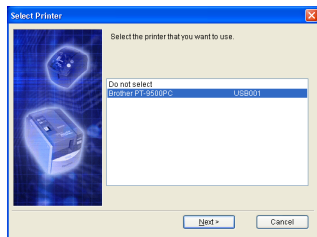
- If you change the name, make sure that the group name you specify is not used already.

10 Select if you want to set up the printer port.

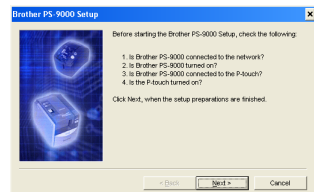


Select "Yes", and then click [Next].

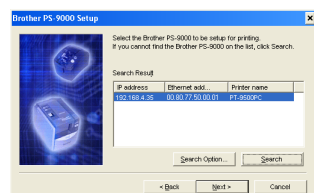
11 Select the P-touch to be set up, and then click [Next].



12 Click [Next].

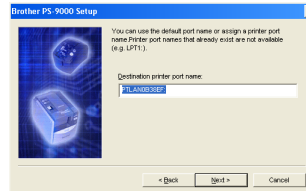


13 Select PS-9000, which is to be set up, and then click [Next].



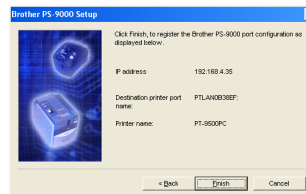
- If the product to be set up is not displayed in the list, click [Search].

14 Type in the printer port name, and then click [Next].

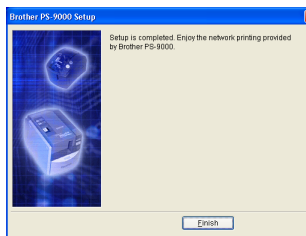


- When you assign the printer port name, make sure that the port name you specify is not used already (e.g., LPT1:).

15 The setup configuration is displayed. Click [Finish].



16 The setup is completed when the dialog box shown below appears. Click [Finish].



7 Contact information

Operational Assistance

For technical and operational assistance you may call Brother Customer Service at:
Voice 1-877-4-PTouch,
or Fax 1-901-379-1210