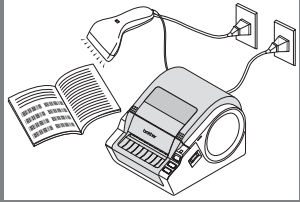


## With a barcode reader connected to the printer, labels and barcodes can easily be printed by scanning barcodes.



### Connect a barcode reader to the printer to create a label or barcode using "P-touch Editor 5.0"



- The following example uses the Windows® XP operating system. Information displayed using different Windows® operating systems and settings will vary.



- Template transfer is only available for printers connected to a Windows® operating system. A USB connection is recommended for connecting this printer to Windows® operating systems. This printer does not support Macintosh® operating systems.
- Ensure that the P-touch Editor 5.0 label size matches the printer label size. Printing will not be possible if the label sizes do not match.

### Advance preparation

- Setting up P-touch template⇒P1
- Setting up RS-232C communication (for communication with a barcode reader)⇒P2

### Basic operation

- Preset template printing⇒P2  
If a frequently used label layout is stored in the printer, identical labels can be printed simply by scanning barcodes.  
**Example:** To simplify printing when the same labels are frequently reused
- Barcode creation (copy) and printing⇒P3  
A barcode scanned with the barcode reader can be printed with the protocol and size from a previously created template.  
**Example:** To print scanned barcodes with multiple protocols and sizes

- Database-assisted label printing⇒P4

If a template and a database (Excel, etc.) are created, the database data can then be arranged in the template.

Labels can be printed by scanning key barcodes that match the barcodes in the database.

**Example:** To manage part numbers using a database (Excel, etc.), and print the corresponding labels

### Advanced operation

- Numbered (sequential) printing⇒P5  
Label and barcode numbers can be printed sequentially.

### Supplement

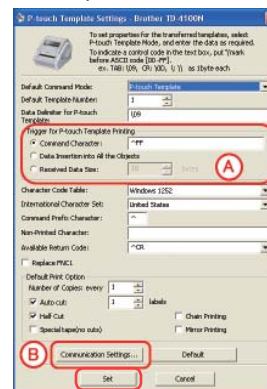
- Connecting a barcode reader⇒P7
- Setting up barcode printing⇒P7

## Advance preparation

### ● Setting up P-touch template

1. Download the P-touch template settings tool from the following URL and start P-touch Template Settings.exe.  
<http://solutions.brother.com/>  
Go to [Select your region/country] - [Choose your product] - [Downloads] sequentially, and download "P-touch Template Tools".

2. Set respective items and click [Set].





In the default setting, printing starts when the ^FF code is scanned by the barcode reader. (This can be changed in A.)

Select the [Received Data Size] check box and specify the number of bytes to print automatically when a barcode with the specified number of bytes is scanned.

The above settings are reset if you print from a computer even once after specifying settings.

If you have printed from a computer, reapply the above settings.

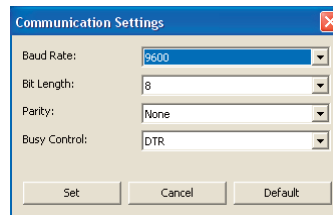
## ● Setting up RS-232C communication (communication with a barcode reader)



Default printer settings

Baud Rate: 9600  
 Bit Length: 8  
 Parity: None  
 Busy Control: DTR  
 Stop bit: 1 (Fixed)

Click B in Setting up P-touch template



If there are no problems, click the [Set] button.

Note: The above settings may differ depending on the scanner.

Ask the scanner manufacturer for details.

# Basic operation

## ● Preset template printing

### ■ Procedure overview

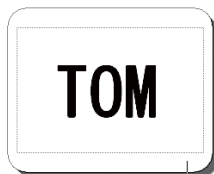
Create a label ⇒ Transfer label data to printer ⇒ Print label

### ■ Procedure

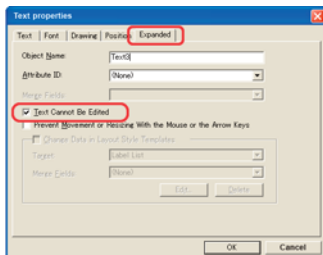
## 1. Create a label template

1. Start P-touch Editor 5.0, and then create and edit the label to be printed.

Example:



2. Select the text on the created label, and then right-click to open [Properties]. Select the [Expanded] tab.



3. Select the [Text Cannot Be Edited] check box and then click [OK].

Note: If this check box is not selected, the data will be replaced and normal printing may not be possible.

## 2. Ensure that the printer is connected to a computer and then transfer the label data to the printer.

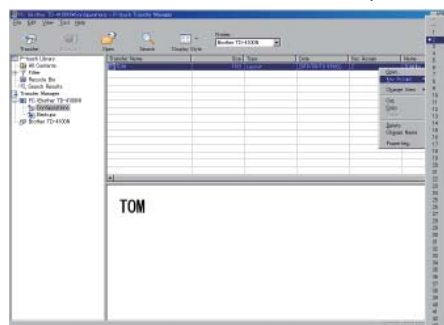
1. Click [File]-[Transfer Template...] to start the P-touch Transfer Manager.



Select the label data from the list and right-click to display the menu.

Select [Key Assign] to assign the key number.

This number becomes the label template number when printing.



Note : - In the example, the "Key Assign" number is 2.

- When printing preset templates, specify a number between 1 and 10.

2. Click [Transfer] to transfer the label data to the printer.

## 3. Connect a barcode reader to the printer.

Refer to "Connecting a barcode reader" on P.7 for more details.

## 4. Print a label

Scan the barcode below, and then scan the barcode that corresponds to the "Key Assign" number used when transferring the data, referring to the preset template numbers below.



Esc i a 3 ^ I I

### ■ Preset template

#### • Preset template 1



^TS001^FF

#### • Preset template 2



^TS002^FF

#### • Preset template 3



^TS003^FF

#### • Preset template 4



^TS004^FF

The template created in step 1 is printed.

In the example, scan the preset template 2 to print the TOM label

Note: The barcodes shown above integrate selection and printing of templates.

For information about preset template numbers other than the above, refer to the "Preset template number" list on P.9.

If you want to print a template with a template number of 10 or above, refer to "List of barcodes for specifying settings" on page 9 and the following pages to scan "Select template" (^TS) / "Entering numbers" (for number 15, scan barcodes in the order of 0, 1, and 5) and "Begin printing" (^FF).

## ● Barcode creation (copy) and printing

### ■ Procedure overview

Prepare the label to be copied ⇒ Create barcode label  
Transfer label data ⇒ Scan barcode label to be copied ⇒ Print label

Note: Prepare the barcode label to be created (copied).

### ■ Procedure

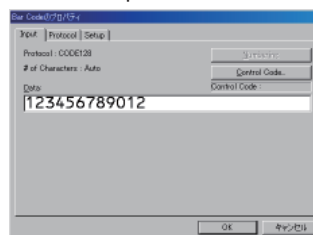
#### 1. Prepare the label to be copied.

Example: Product barcode, etc.

## 2. Create a label template (barcode)

1. Start P-touch Editor 5.0.
2. Press [Insert] [Barcode] to open the barcode properties, and enter the data.

Note: In the example, the following number is used to create a template.



Example:  
(EAN13)



3. Save the data.

Note : - The label will be printed using the protocol of the barcode previously specified in the template.  
- Specify the label length in accordance with the maximum number of barcodes to be used.

## 3. Ensure that the printer is connected to a computer and then transfer the label data to the printer.

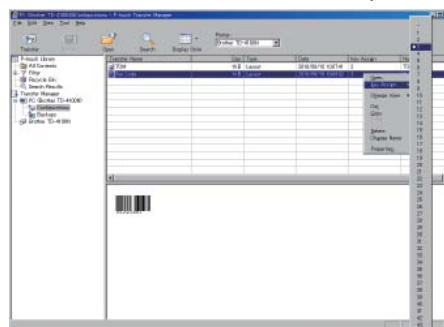
1. Click [File]-[Transfer Template... ] to start the Transfer Manager.



Select the label data from the list and right-click to display the menu.

Select [Key Assign] to assign the key number.

This number becomes the label template number when printing.



Note: In the example, the "Key Assign" number is 3.

2. Click [Transfer] to transfer the label data to the printer.

## 4. Connect a barcode reader to the printer.

Refer to "Connecting a barcode reader" on P.7 for more details.

## 5. Print a barcode

1. Scan the "P-touch template command (Initialize + begin specifying settings)" barcode below.
  - P-touch template command (Initialize + begin specifying settings)



2. Scan the template that corresponds to the "Key Assign" number.
  - Example: If the "Key Assign" number is 3.
  - Select template



Note: The above barcode integrates ^TS,00,3 and three barcodes. For details on each barcode, refer to "List of barcodes for specifying settings" on P.8.

3. Scan the barcode label prepared in step 1.
  - Example: Product barcode, etc.
4. Scan the "Begin printing" barcode below.
  - Begin printing



The label scanned in step 5-3 above is printed.

## Database-assisted label printing

### Procedure overview

Create database-linked data → Transfer label data → Print label

In the following example, a label is created containing a product barcode (1), a product name (2), and a price (3). The required label can be printed by scanning the product barcode.

Example:



Note: Create in advance the key barcode to be used in step 4-3.

### Procedure

## 1. Create database-linked (Excel, etc.) data.

1. Create an Excel database (list).

When creating the label in the example

- (1) Items to be contained in the barcode section (control number, etc.) = key barcode
- (2) Product name

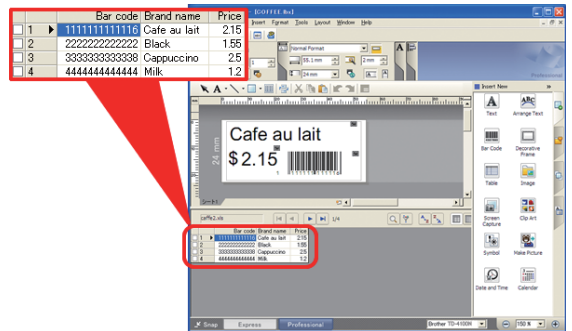
- (3) Price

Create a database containing the above data.

2. Start P-touch Editor 5.0, connect to the database, and create the linked data.

Click [File] – [Database] – [Connect], and specify the database location to connect to the database.

Click [Insert] – [Database field], and specify any additional object formatting. Select the fields to be added from the available database fields.



Note: For details on how to link to a database, refer to the P-touch Editor Help.



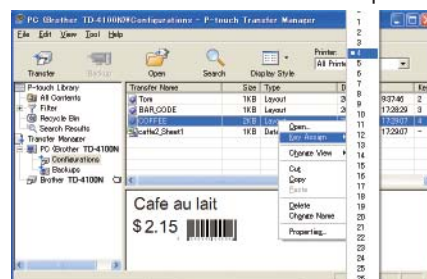
- Compatible Excel database formats: \*.xls, \*.mdb, \*.csv, and \*.txt.
- Save the P-touch Editor data (\*.lxb) and database data in the same folder.
- An item title entered in the first line of the database can be used as the field name when linked.
- The field name can be specified on the [Database] and [Connect] wizards.
- Enter the barcode number in the first line of the database. This setting enables you to print the label that corresponds with the barcode number scanned in step 4-3.

## 2. Ensure that the printer is connected to a computer and then transfer the data linked to the database to the printer.

1. Click [File]-[Transfer Template...] and start the P-touch Transfer Manager.



Select the label data from the list and right-click to display the menu. Select [Key Assign] to assign the key number. This number becomes the label template number when printing.



2. Click [Transfer] to transfer the database data to this printer.

## Basic operation

### 3. Connect a barcode reader to the printer.

Refer to "Connecting a barcode reader" on P.7 for more details.

### 4. Print a label.

1. Scan the "P-touch template command (Initialize + begin specifying settings)" barcode below.
  - P-touch template command (Initialize + begin specifying settings)



2. Scan the template that corresponds to the "Key Assign" number.

Example: If the "Key Assign" number is 4

- Select template



Note: The above barcode integrates ^TS,00,4 and three barcodes. For details on each barcode, refer to "List of barcodes for specifying settings" on P.8.

3. Scan the barcode to be printed from the database sent together with the template.

Example: 2222222222222222 barcode

4. Scan the "Delimiter" barcode below.

- Delimiter



5. Scan the "Begin printing" barcode below.

- Begin printing



In the following example, a product name (Black) and price (\$1.55) label is printed that corresponds to the same barcode(2222222222222222) line.

Print example:



## Advanced operation

### ● Numbered (sequential) printing

Label and barcode numbers can be printed while automatically counting up.

### ■ Text labels

#### ■ Procedure overview

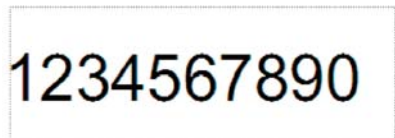
Create text label⇒Transfer label data⇒Print label

#### ■ Procedure

### 1. Create a text label.

1. Start P-touch Editor 5.0.
2. Enter text.

Example:



3. "Hold down the left mouse button and highlight the entered text."



4. Right-click and select [Numbering (sequential)].



- For each template, numbering ranges can be specified for up to 9 objects.
- Up to 15 characters can be specified in a numbering range.

### 2. Ensure that the printer is connected to a computer and then transfer the label data to the printer.

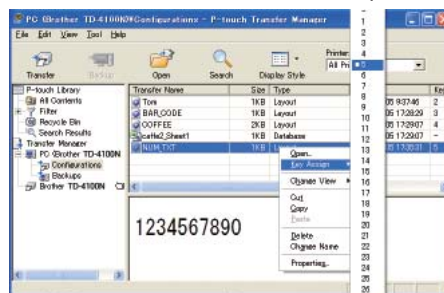
1. Click [File]-[Transfer Template...] to start the P-touch Transfer Manager.



Select the label data from the list and right-click to display the menu.

Select [Key Assign] to assign the key number.

This number becomes the label template number when printing.



2. Click [Transfer] to transfer the label data to the printer.

## 3. Connect a barcode reader to the printer.

Refer to "Connecting a barcode reader" on P.7 for more details.

## 4. Print a label

1. Scan the "P-touch template command (Initialize + begin specifying settings)" barcode below.



2. "Find the relevant "Key Assign" numbers on P.9, and scan." Example: If the "Key Assign" number is 5

- Select template



3. Scan the "Number of copies for numbered (sequential) printing" command.



4. Specify the number of labels to be printed. Refer to "Entering numbers" on P.8 and scan the barcodes to specify the number of labels to be printed in the 3-digit format.

Example: To print 5 labels



5. Scan the "Begin printing" barcode below.



In the example, labels 1234567890 to 1234567894 are printed.



- Labels are counted up one at a time as each label is printed.
- The number of labels printed is retained by the printer even when the power is turned OFF.
- To reset the counter, scan the following "Initialize template data" barcode.



## Barcode labels

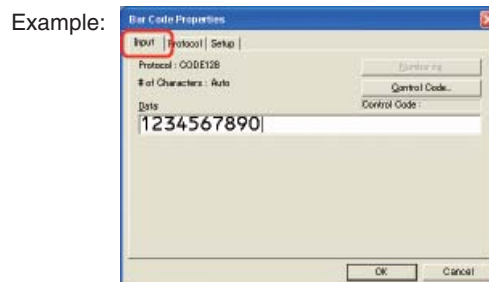
### Procedure overview

Create barcode label ⇒ Transfer label data ⇒ Print label

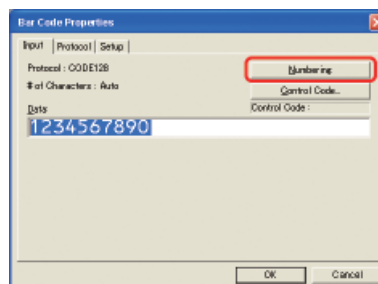
### Procedure

#### 1. Create a barcode label.

1. Start P-touch Editor 5.0.
2. Click [Insert]-[Bar Code...] to open the barcode properties and then enter data.



3. "Hold down the left mouse button and highlight the entered data."



4. Click the [Numbering (sequential)] button, and then click [OK].



- For each template, numbering ranges can be specified for up to 9 objects.
- Up to 15 characters can be specified in a numbering range.

#### 2. Ensure that the printer is connected to a computer and then transfer the label data to the printer.

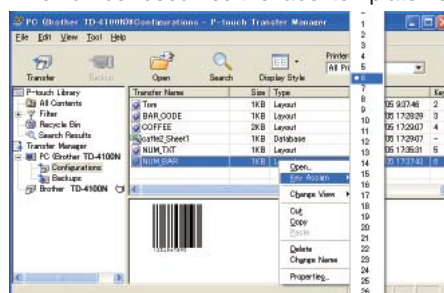
1. Click [File]-[Transfer Template...] to start the P-touch Transfer Manager.



Select the label data from the list and right-click to display the menu.

Select [Key Assign] to assign the key number.

This number becomes the label template number when printing.



## Advanced operation

2. Click [Transfer] to transfer the label data to the printer.

### 3. Connect a barcode reader to the printer.

Refer to "Connecting a barcode reader" on P.7 for more details.

### 4. Print a label

1. Scan the "P-touch template command (Initialize + begin specifying settings)" barcode below.



2. "Find the relevant "Key Assign" numbers on P.9, and scan."  
Example: If the "Key Assign" number is 6.

- Select template



3. Scan the "Number of copies for numbered (sequential) printing" command.



4. Specify the number of labels to be printed.

Refer to "Entering numbers" on P.8 and scan the barcodes to specify the number of labels to be printed in the 3-digit format.  
Example: To print 5 labels



5. Scan the "Begin printing" barcode below.



In the example, labels 1234567890 to 1234567894 are printed.



- Labels are counted up one at a time as each label is printed.
- The number of labels printed is retained by the printer even when the power is turned OFF.
- To reset the counter, scan the following "Initialize template data" barcode.



## Supplement

### ● Connecting a barcode reader

1. Set the barcode reader with no prefix or suffix.



Settable functions differ depending on the type of barcode reader.

2. For serial connection (RS-232C) only.  
Execute that the communication settings of this printer and the barcode reader match.  
For more details on the communication settings for this printer, refer to "Setting up RS-232C communication (communication with a barcode reader)".
3. Connect a barcode reader.

### ● Setting up barcode printing

Printing can be setup or specified on the barcode reader.

#### ■ Changing the basic settings

1. Scan the "P-touch template command" barcode. Refer to "List of barcodes for specifying settings" on P.8.
2. From the "Basic settings" barcodes, scan the barcode for the specified parameter.

#### ※ Precautions when specifying the number of copies to be printed.

1. Scan the "P-touch template command" barcode. Refer to "List of barcodes for specifying settings" on P.8.
2. Scan "Number of copies" barcode. Refer to "List of barcodes for specifying settings" on P.8.
3. Scan the barcodes for number of copies to be triple digits. Refer to "List of barcodes for specifying settings" and "Entering numbers" on P.8.  
Example: 7⇒[00][7] 15⇒[0][1][5]

## List of barcodes for specifying settings



Request:

When using this list of barcodes for specifying settings, set the P-touch Template control and prefix character command initial settings.

- P-touch template command (Initialize + begin specifying settings)



- Basic settings

- Cut Every 1\*1



- Cut Every 2



- Cut at end setting



- Cutter Off



- Number of copies\*2



- Entering numbers\*2



Always scan as a three-digit number.

- 1



- 2



- 3



- 4



- 5



- 6



- 7



- 8



- 9



- 0



- 00





- Preset template number



- Select template<sup>\*2</sup>



- Delimiter



- Begin printing



\*1 Default settings.

\*2 Used when specifying the number of copies and selecting the template number. Scan as 3-digits, such as [007] or [015]. Numbers are set automatically when scanned as 3-digits. To change settings, scan "Number of copies" or "Select template" accordingly, and then re-scan the 3-digit number.

## ● FAQ

Q What is the built-in memory capacity?

A It's 2MByte.

Q What is the maximum number of templates that can be entered?

A Up to 99 templates can be entered. However, it may not be possible to enter 99 templates if the maximum memory capacity (2MB) is exceeded.

Q Is it possible to check templates transferred to the printer?

A Yes.  
Hold down the feed button to print a list of transferred templates.

Q Is there a tool to easily specify P-touch template settings?

A Refer to "Setting up P-touch templates" in "Advance preparation" on page 1 of this manual.

Q Is it possible to change the numbering of transferred templates?

A Yes.  
Edit the original template with P-touch Editor to create a template with the numbers to be changed.  
After editing, transfer to the printer.

Q Is it possible to initialize the numbering?

A Yes.  
Scan the ^ID command on P7 to initialize the numbering.

Q What is the maximum number of digits for numbering?

A Up to 15 digits can be used.

Q How can the transferred data be deleted?

A Connect the printer to a computer USB port and open P-touch Transfer Manager. Right click the items to be deleted from the transferred data list.

Q How can "Key Assign" be checked?

A Hold down the feed button to check "Key Assign" along with the transferred templates. It is also possible to check easily on a computer using P-touch Transfer Manager.

Q Is it possible to link multiple databases to one template?

A No.  
Multiple databases cannot be linked to one template.

Q Is it possible to print the date and time automatically?

A No.  
The printer does not have a clock function, and so it is not possible to automatically print the date and time.

Note: Our QL-650TD features a clock function.

Q What kind of barcode scanners can be used?

A It is possible to use a scanner with a RS-232C (serial) connection and its own power supply.  
Note: The printer cannot supply power to a scanner.

Q What should I do if there's no response after following all the setting and scanning steps?

A The settings are reset if you print from a computer even once. Specify the settings again, referring to "Advance preparation" on P1.